

- Space located on the 3rd floor of the Main Grandstand, in front of the main straight, just in front of the Pit Lane.
- Space with capacity for 350 people located on the third floor of the main grandstand. Sale per person.
- Panoramic view.

Includes:

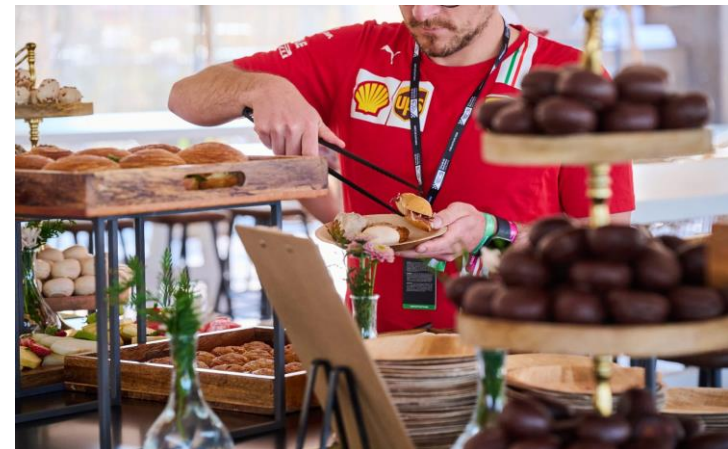
- **Main Covered Grandstand:** Entrance with unnumbered seat and access for 3 days (Friday, Saturday, Sunday).
- **Sky View:** 2-day access (Saturday and Sunday) with full catering service and Open Bar.
- Accessible for PRM (people with reduced mobility).
- **Parking** Not included, available at an extra cost.
- TV screens with broadcast of the race inside.
- Friday, No access to Sky View, access to the Main Grandstand.



- Outdoor space, located next to Grandstand H, in the last corner before entering the straight.
- Access to Grandstand H and the Garden Village, with lounge space, gastronomy and live music.
- Shared space with capacity for up to 600 people. Sale per person.

Includes:

- **Grandstand H:** Unnumbered seat with access for 3 days (Friday, Saturday and Sunday)
- **Garden Village:** Access for 2 days (Saturday and Sunday) with full catering service and Open Bar.
- **Parking** Not included, available with supplement.
- TV screens with broadcast of the race.
- Friday, No access to Garden Village, access to Grandstand H.



- Excellent location located above the pits.
- Shared space with capacity for up to 300 people. Sale per person.
- Balcony with view of the track, gastronomy, live music...
- TV with broadcast of the race.

Includes:

- **Access to the Grandstand T-10** covered on Friday, Saturday and Sunday.
- **Montjuïc Club:** Access for 3 days (Friday, Saturday and Sunday) with full catering service and Open Bar.
- Live Music, Vial Tour* (subject to availability*)
- **Parking** Not included, available at an extra cost.



PITLANE LOUNGE

- Space located on the second floor of the building located in IN2, with capacity for 250 people.
- Balcony with view of the track from the Pit Lane. Gastronomy and live music.
- Access to the terrace of the Pitlane Lounge with panoramic view.
- TV screens, included with broadcast of the race.

Includes:

- **Access to Grandstand T-10** covered on Friday, Saturday and Sunday.
- **Pitlane Lounge:** Access for 3 days (Friday, Saturday and Sunday) with full catering service and Open Bar.
- Live Music, Vial Tour* (subject to availability*)
- Parking included.



CIRCUIT ROOFTOP LOUNGE

- Space located on the 2nd floor of the Rooftop, a new building designed to offer a high-end experience.
- Space with capacity for 200 people. Sale per person.

Includes:

- **Rooftop Lounge:** Access for 3 days (Friday, Saturday and Sunday).
- Access to the terrace with panoramic view.
- **Grandstand T-10 Covered:** Access for 3 days (Friday, Saturday and Sunday).
- Michelin-starred gastronomic service and Open Bar, during the 3 days (Friday, Saturday and Sunday).
- Amazing experiences: like driving F1 simulators, live music, welcome pack.
- Accessible for PRM (people with reduced mobility).
- Parking included.

